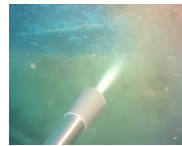


Diesel PRO High Pressure Unit

96 LPM @ 410 bar

The diesel engine driven HDMD410_96 high pressure unit is built on a skid with stainless steel pump head for underwater coating removal and extreme offshore cavitation cleaning operations. The high water volume of 96 LPM at 410 bar can be used with the CW550 Pro retro gun.



Specifications

Compatible with: CW550

Max. Pressure: 410 bar (5,945 psi)

Max. flow: 96 LPM (25.4 GPM)

Power: 99HP Iveco diesel engine

Weight: 1300kg (2,866 lbs)

Dimensions: 280x165x85160cm
(110x65x63")

Features

- Removes hard fouling, debris, corrosion and coatings
- Stainless steel pump head
- Heavy duty skid
- Big cartridge filter at pump inlet
- Pressure valve
- Motor thermal protection
- Hour counter
- Emergency stop
- Manual throttle control